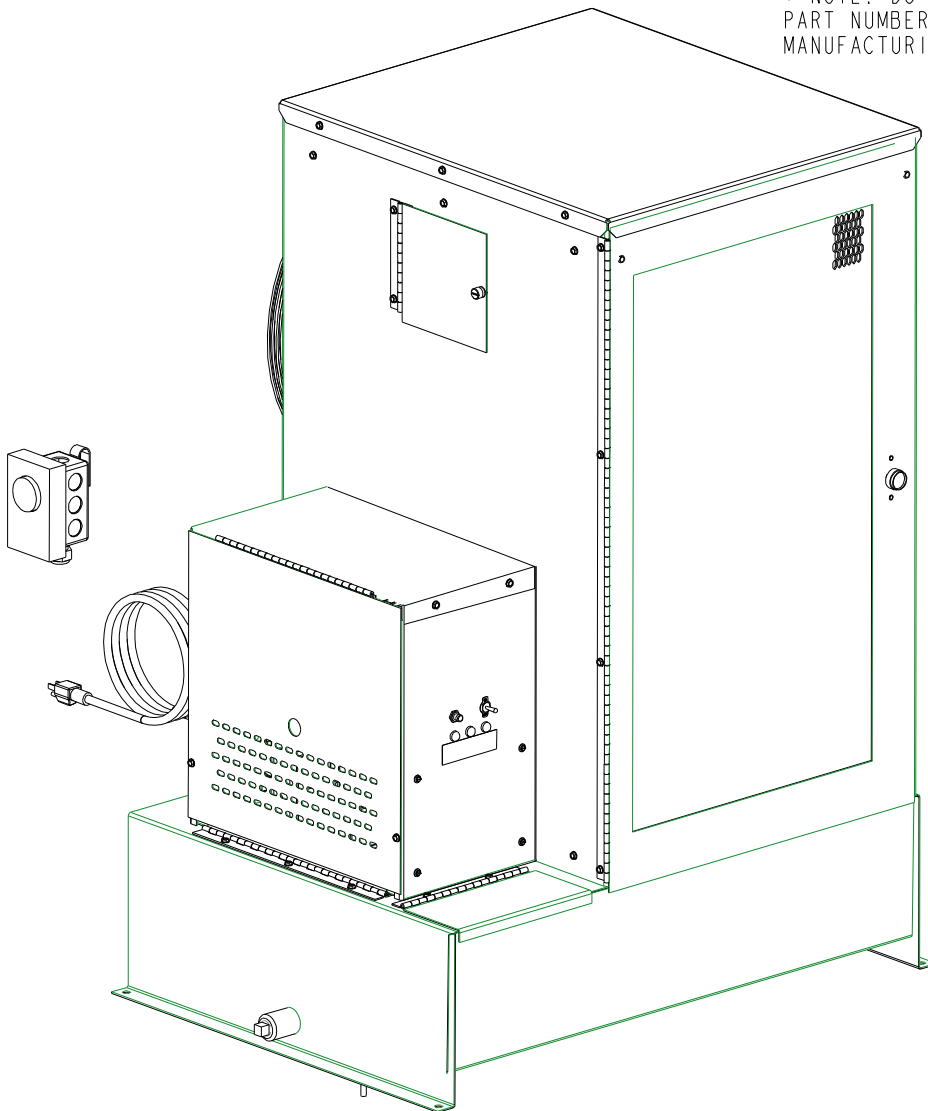


BILL OF MATERIALS

| ITEM | QTY | PART DESCRIPTION | PART \ DRW# |
|------|-----|--------------------------|-------------|
| 1 | 4 | POP RIVET | 02-522210 |
| 2 | 1 | DECAL SPEC. PLATE | 26-101009 |
| 3 | 1 | SPEC. PLATE | BAE-0008 |
| 4 | 1 | CONTROL BOX LID ASSEMBLY | BAE-0263 |
| 5 | 1 | PUMP ASSEMBLY | CAE-0002 |
| 6 | 1 | DRIP TUBE ASSEMBLY | EAE-0003 |
| 7 | 1 | CNTRL BOX WIRING ASS'Y | FAE-0007 |
| 8 | 1 | INSULATION GASKET | IAE-0004 |
| 9 | 1 | 120 PACKAGING ASSEMBLY | JAE-0003 |
| 10 | 1 | MACHINE SUB-ASSEMBLY | XAE-0001 |

* NOTE: DO NOT PRINT THE UNDERSCORE
PART NUMBERS WHEN PRINTING FOR
MANUFACTURING OR MANUAL PAGES.



SHEET 1 OF 2

| | | |
|-------------|------------------|----------------|
| TITLE | WASTE OIL HEATER | |
| DESCRIPTION | 120 ELIMINATOR | |
| DATE | 05-Jan-07 | DWG# AENH-0001 |

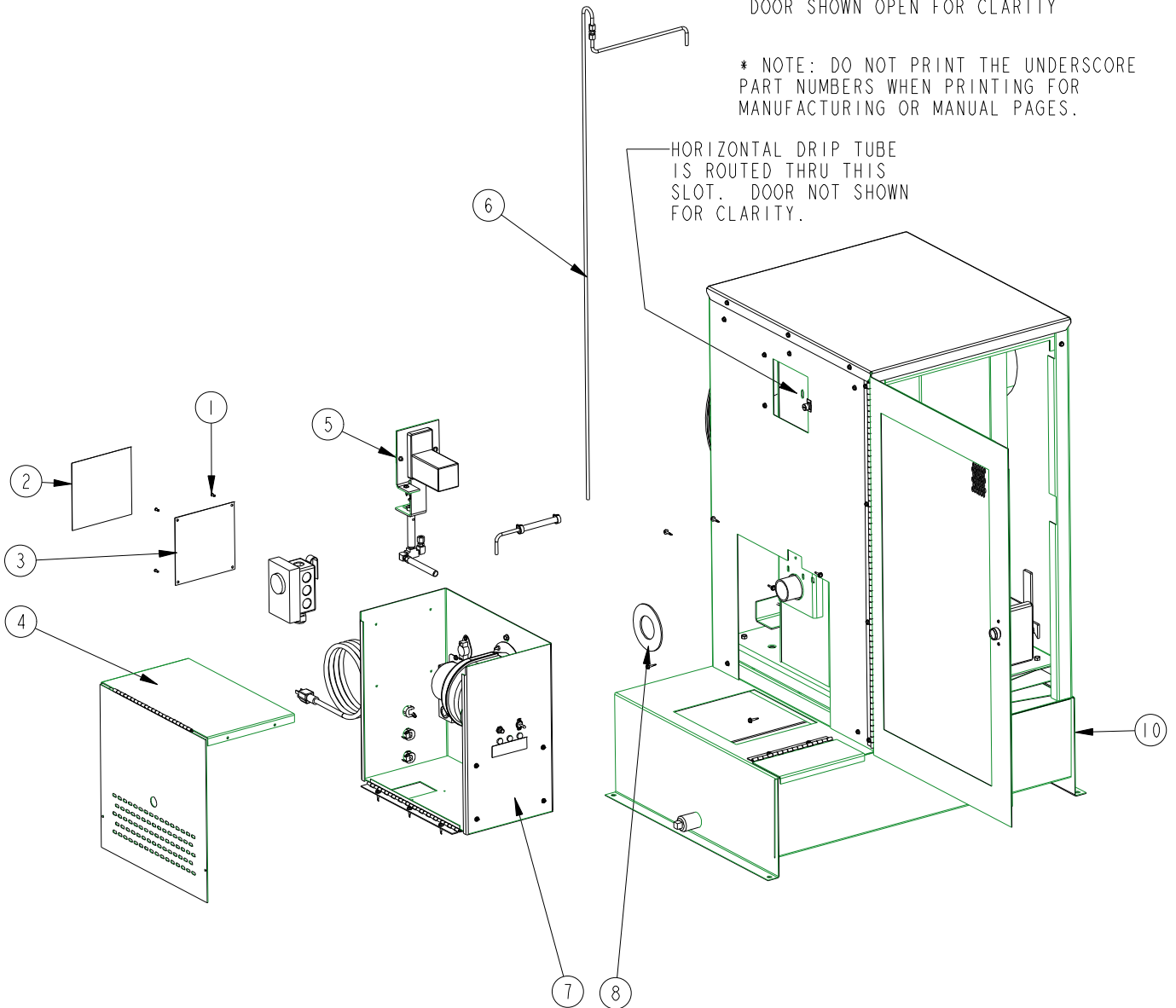
BILL OF MATERIALS

| ITEM | QTY | PART DESCRIPTION | PART \ DRW# |
|------|-----|--------------------------|-------------|
| 1 | 4 | POP RIVET | 02-522210 |
| 2 | 1 | DECAL SPEC. PLATE | 26-101009 |
| 3 | 1 | SPEC. PLATE | BAE-0008 |
| 4 | 1 | CONTROL BOX LID ASSEMBLY | BAE-0263 |
| 5 | 1 | PUMP ASSEMBLY | CAE-0002 |
| 6 | 1 | DRIP TUBE ASSEMBLY | EAE-0003 |
| 7 | 1 | CNTRL BOX WIRING ASS'Y | FAE-0007 |
| 8 | 1 | INSULATION GASKET | IAE-0004 |
| 9 | 1 | 120 PACKAGING ASSEMBLY | JAE-0003 |
| 10 | 1 | MACHINE SUB-ASSEMBLY | XAE-0001 |

DOOR SHOWN OPEN FOR CLARITY

* NOTE: DO NOT PRINT THE UNDERSCORE PART NUMBERS WHEN PRINTING FOR MANUFACTURING OR MANUAL PAGES.

HORIZONTAL DRIP TUBE IS ROUTED THRU THIS SLOT. DOOR NOT SHOWN FOR CLARITY.



SHEET 2 OF 2

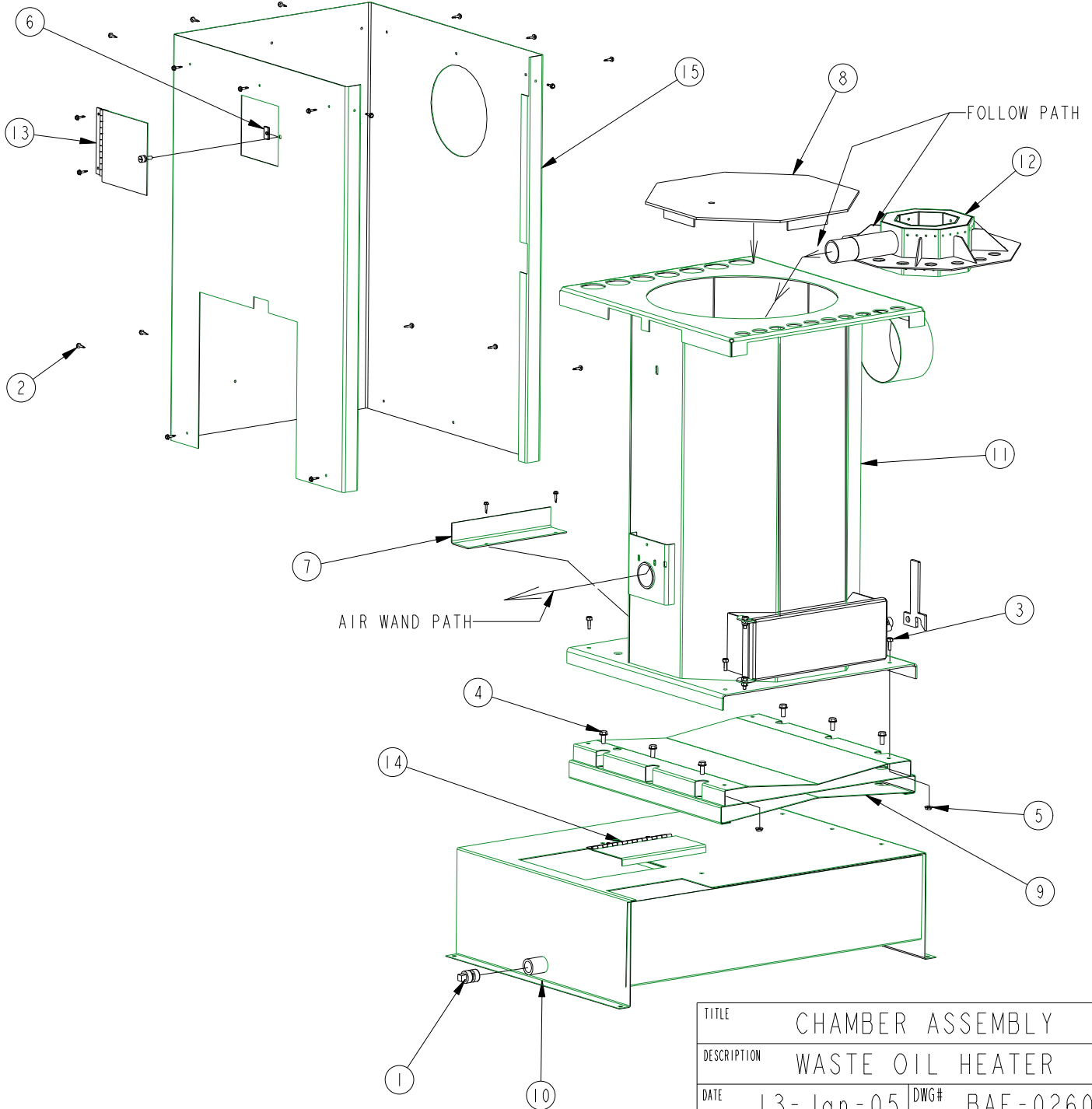
| | | |
|-------------|------------------|----------------|
| TITLE | WASTE OIL HEATER | |
| DESCRIPTION | 120 ELIMINATOR | |
| DATE | 05-Jan-07 | DWG# AENH-0001 |

BILL OF MATERIALS

| ITEM | QTY | PART DESCRIPTION | PART \ DRW# |
|------|-----|------------------------|-------------|
| 1 | 2 | PLUG | 01-231403 |
| 2 | 22 | SCREW | 02-101400 |
| 3 | 4 | CAPSCREW | 02-111100 |
| 4 | 6 | BOLT | 02-121105 |
| 5 | 4 | NUT | 02-301100 |
| 6 | 1 | RECEPTACLE | 02-541110 |
| 7 | 1 | MOUNTING BRACKET | BAE-0150 |
| 8 | 1 | CHAMBER COVER WELDMENT | BAE-0180 |

BILL OF MATERIALS

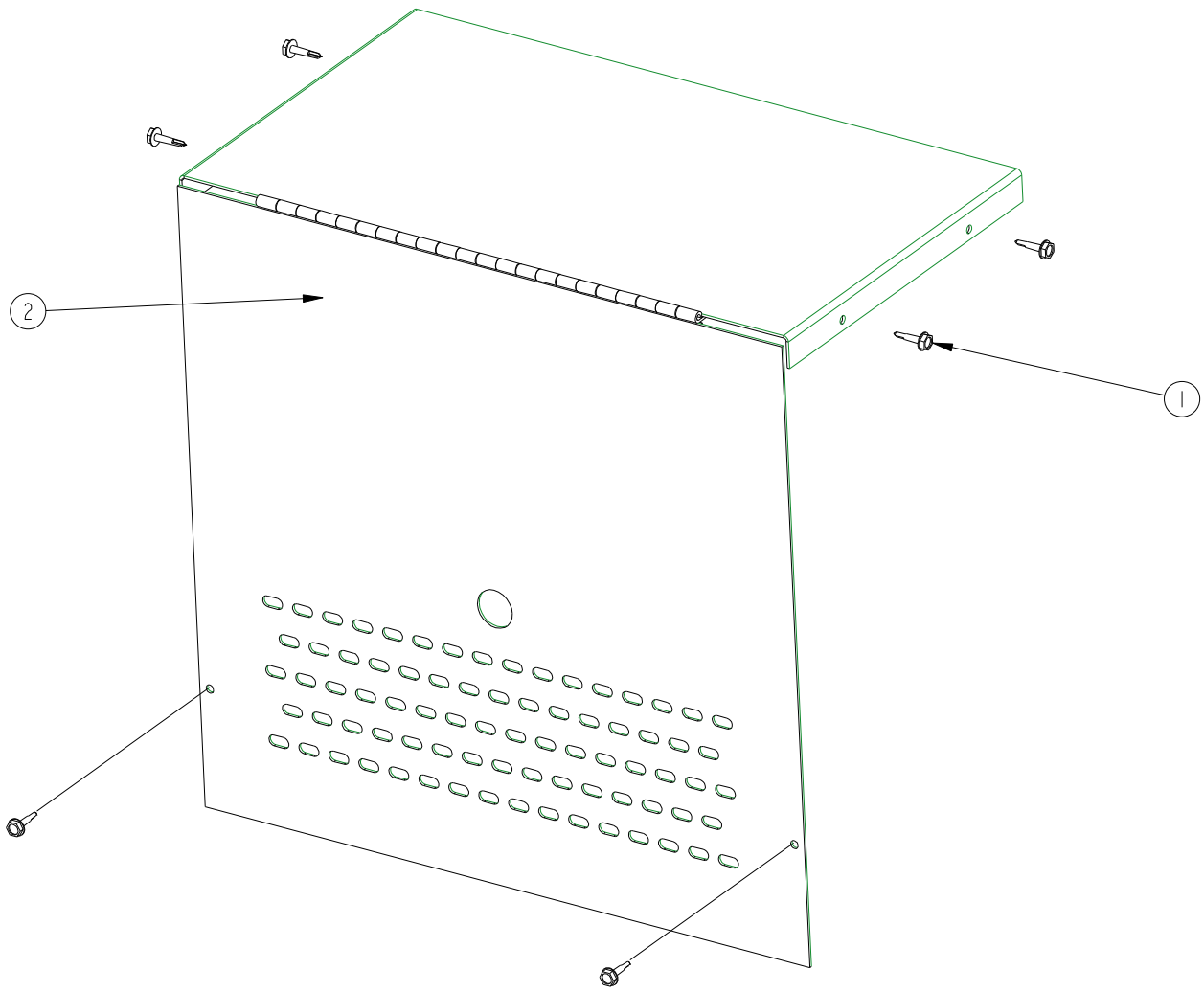
| ITEM | QTY | PART DESCRIPTION | PART \ DRW# |
|------|-----|--------------------------|-------------|
| 9 | 1 | BAFFLE WELDMENT | BAE-0182 |
| 10 | 1 | TANK WELDMENT | BAE-0183 |
| 11 | 1 | CHAMBER WELDMENT | BAE-0214 |
| 12 | 1 | AIR WAND WELDMENT | BAE-0242 |
| 13 | 1 | SIDE ACCESS DOOR ASS'Y | BAE-0259 |
| 14 | 1 | TANK FILL COVER ASSEMBLY | BAE-0266 |
| 15 | 1 | WRAPPER WELDMENT | BAE-0230-1 |



| | | | |
|-------------|------------------|------|----------|
| TITLE | CHAMBER ASSEMBLY | | |
| DESCRIPTION | WASTE OIL HEATER | | |
| DATE | 13-Jan-05 | DWG# | BAE-0260 |

BILL OF MATERIALS

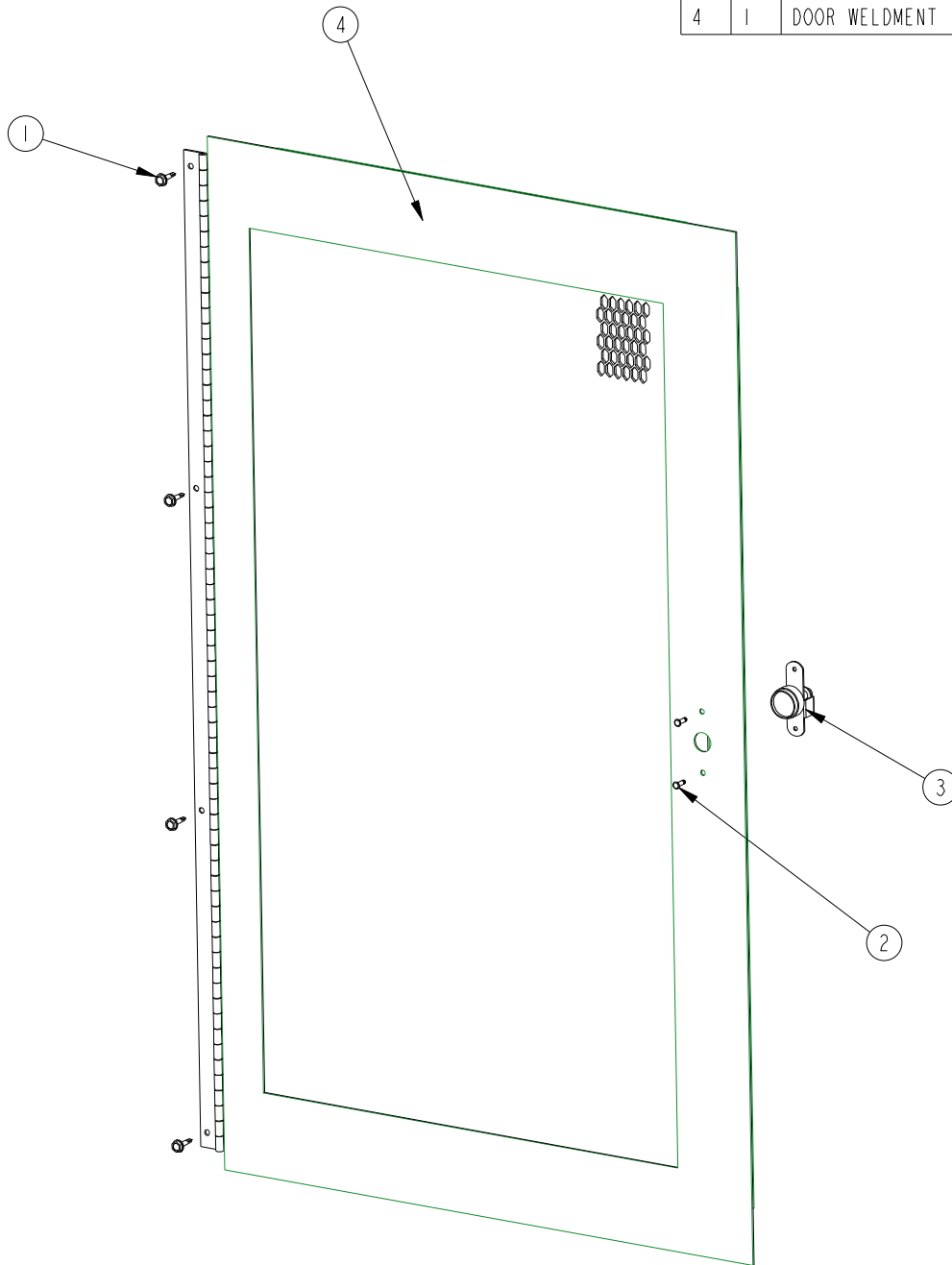
| ITEM | QTY | PART DESCRIPTION | PART \ DRW# |
|------|-----|----------------------------|-------------|
| 1 | 6 | SCREW | 02-101400 |
| 2 | 1 | CONTROL BOX HINGE WELDMENT | BAE-0235 |



| | | | |
|-------------|--------------------------|------|----------|
| TITLE | CONTROL BOX LID ASSEMBLY | | |
| DESCRIPTION | WASTE OIL HEATER | | |
| DATE | 13-Jan-05 | DWG# | BAE-0263 |

BILL OF MATERIALS

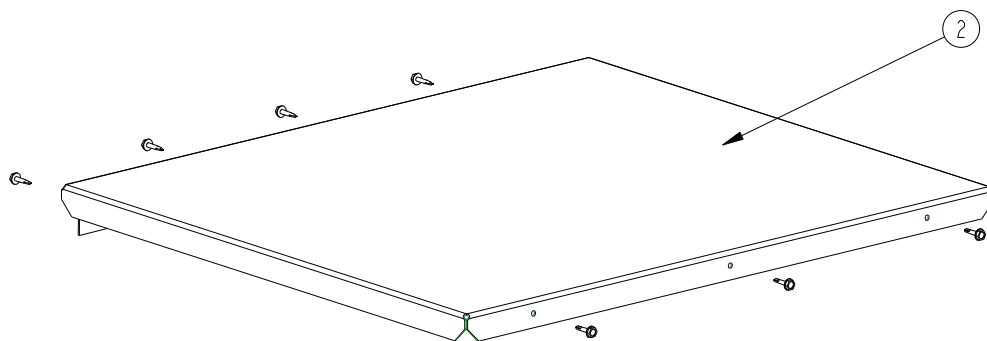
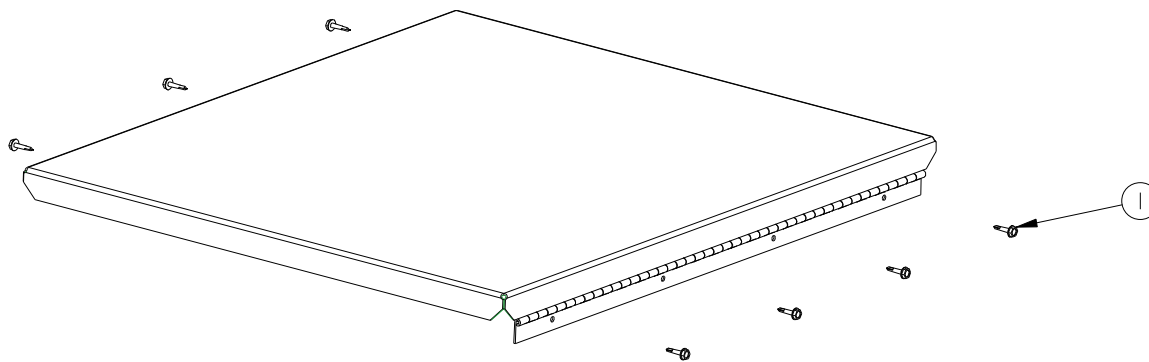
| ITEM | QTY | PART DESCRIPTION | PART \ DRW# |
|------|-----|-----------------------|-------------|
| 1 | 4 | SCREW | 02-101400 |
| 2 | 2 | POP RIVET | 02-522100 |
| 3 | 1 | SPRING LATCH FASTENER | 02-541000 |
| 4 | 1 | DOOR WELDMENT | BAE-0240 |



| | | |
|-------------|----------------------|---------------|
| TITLE | CHAMBER DOOR ASSY | |
| DESCRIPTION | 120 WASTE OIL HEATER | |
| DATE | | DWG# BAE-0264 |

BILL OF MATERIALS

| ITEM | QTY | PART DESCRIPTION | PART \ DRW# |
|------|-----|------------------------|-------------|
| 1 | 7 | SCREW | 02-101400 |
| 2 | 1 | WRAPPER COVER WELDMENT | BAE-0218 |

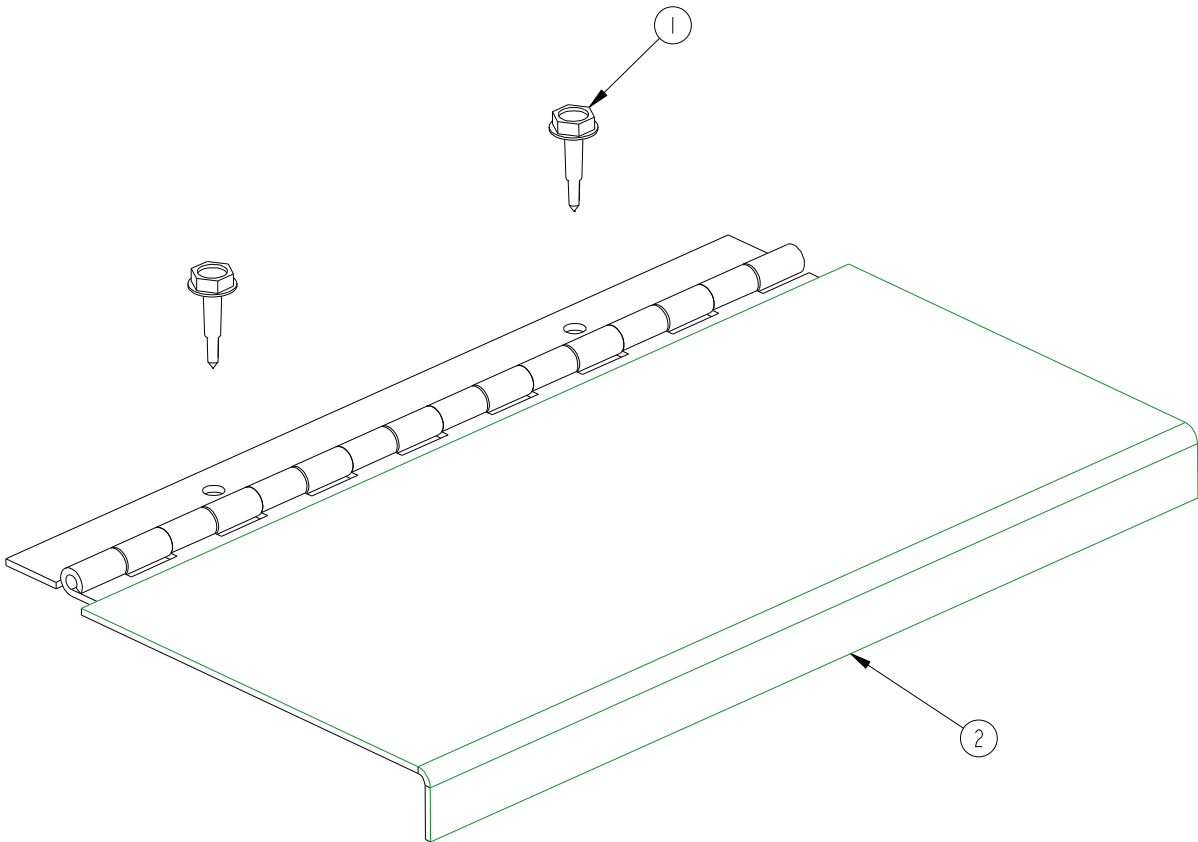


ISO VIEWS

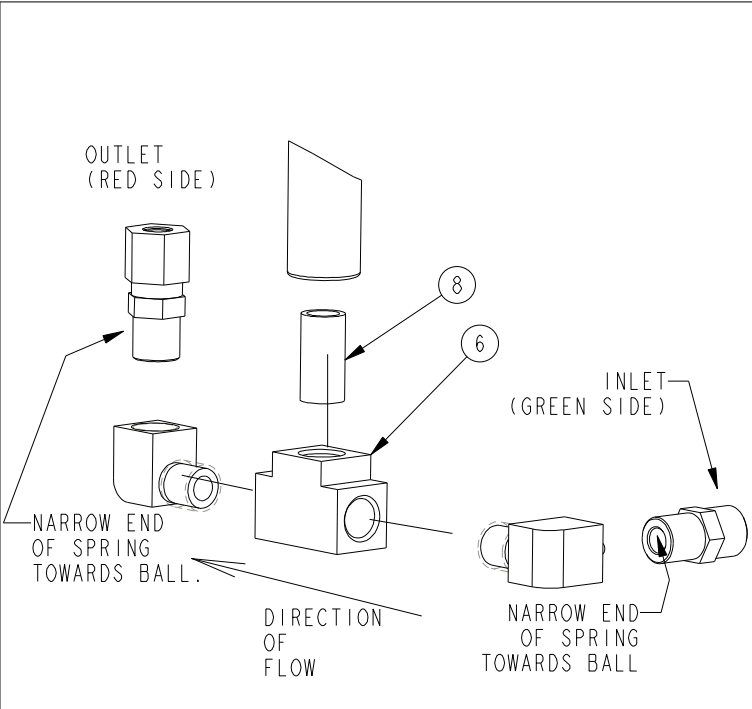
| | | | |
|-------------|------------------------|------|----------|
| TITLE | WRAPPER COVER ASSEMBLY | | |
| DESCRIPTION | WASTE OIL HEATER | | |
| DATE | 13-Jan-05 | DWG# | BAE-0265 |

BILL OF MATERIALS

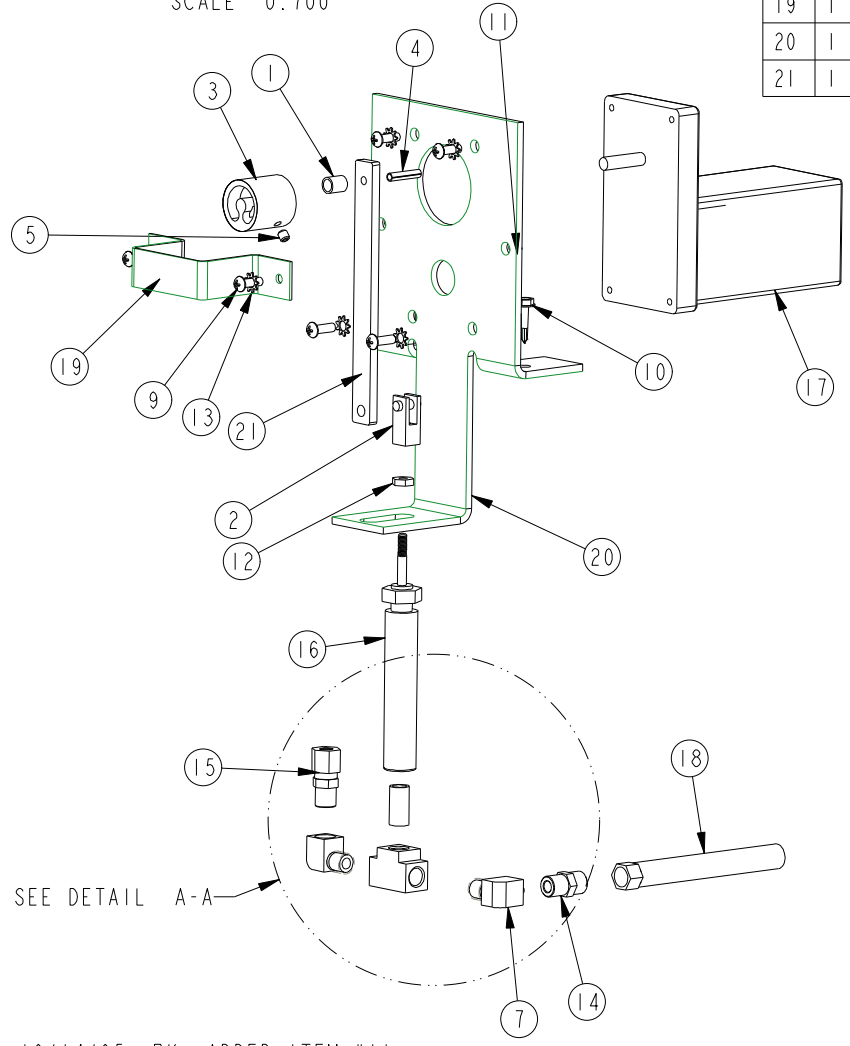
| ITEM | QTY | PART DESCRIPTION | PART \ DRW# |
|------|-----|--------------------------|-------------|
| 1 | 2 | SCREW | 02-101400 |
| 2 | 1 | TANK FILL COVER WELDMENT | BAE-0220 |



| | | |
|-------------|--------------------------|---------------|
| TITLE | TANK FILL COVER ASSEMBLY | |
| DESCRIPTION | WASTE OIL HEATER | |
| | 17-Jan-05 | DWG# BAE-0266 |



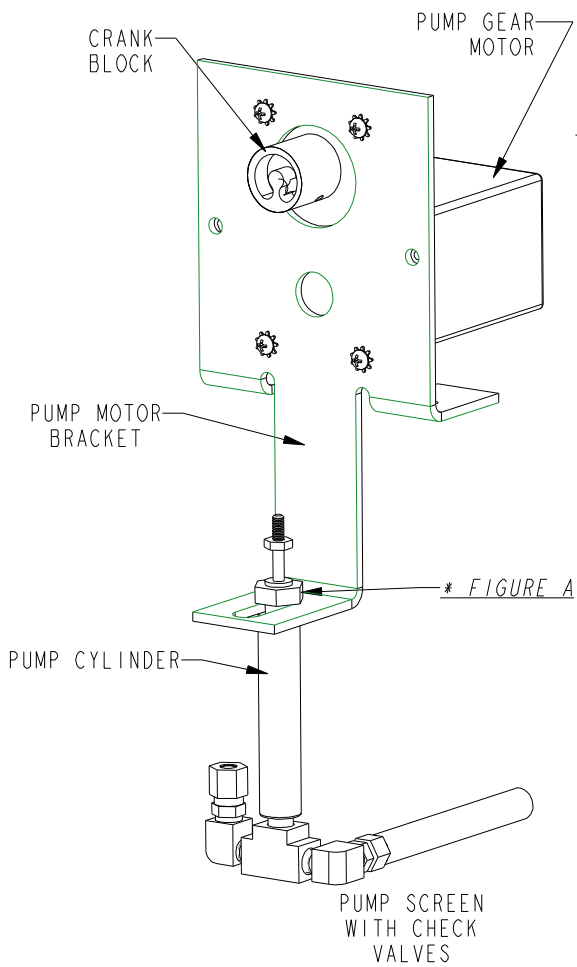
DETAIL A-A
SCALE 0.700



| BILL OF MATERIALS | | | |
|-------------------|-----|--------------------------|-------------|
| ITEM | QTY | PART DESCRIPTION | PART \ DRW# |
| 1 | 1 | BUSHING | 63315 |
| 2 | 1 | CLEVIS ASSEMBLY | 63375 |
| 3 | 1 | CRANK BLOCK | 63510 |
| 4 | 1 | ROLL PIN | 64380 |
| 5 | 1 | SET SCREW | 64425 |
| 6 | 1 | BRASS TEE | 64590 |
| 7 | 2 | ELBOW | 01-131005 |
| 8 | 1 | NIPPLE CLOSE | 01-251002 |
| 9 | 6 | SCREW | 02-101100 |
| 10 | 2 | SCREW | 02-101400 |
| 11 | 2 | NUT | 02-301000 |
| 12 | 1 | NUT | 02-301002 |
| 13 | 6 | STAR WASHER | 02-501002 |
| 14 | 1 | CHECK VALVE - INLET | 05-000202 |
| 15 | 1 | CHECK VALVE - OUTLET | 05-000204 |
| 16 | 1 | PUMP CYLINDER | 06-000102 |
| 17 | 1 | PUMP GEAR MOTOR | 07-000101 |
| 18 | 1 | PUMP SCREEN | 10-002306 |
| 19 | 1 | PUMP ROD SUPPORT BRACKET | BAE-0007 |
| 20 | 1 | PUMP MOTOR BRACKET | BAE-0210 |
| 21 | 1 | PUMP ROD | BAE-0211 |

A 10/14/05 BK ADDED ITEM #11

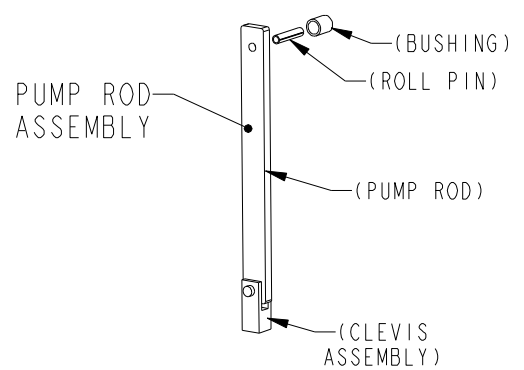
| | | |
|-------------|----------------------|----------|
| TITLE | PUMP ASSEMBLY | |
| DESCRIPTION | 120 WASTE OIL HEATER | |
| DATE | DWG# | CAE-0002 |



STAGE #1:

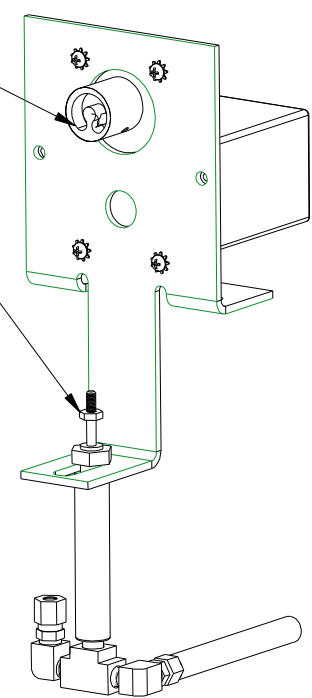
ASSEMBLE PARTS TO PUMP MOTOR BRACKET AS SHOWN IN ILLUSTRATION LABELED "STAGE #1". MAKE SURE PUMP MOTOR BRACKET IS SANDWICHED BETWEEN THE JAM NUTS & CYLINDER HEAD, LOCATED ON THE ROD END OF THE PUMP CYLINDER. (REFER TO " * FIGURE A")

STAGE #1



* FIGURE B
(GROOVE IN UPPER POSITION.)

* FIGURE C



STAGE #2:

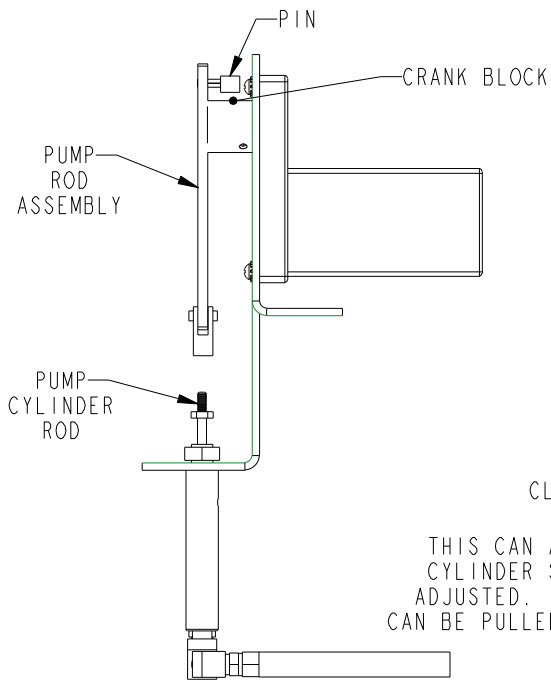
ASSEMBLE, CLEVIS ASSEMBLY, PUMP ROD, ROLL PIN, AND BUSHING, TO CREATE PUMP ROD ASSEMBLY.

MAKE SURE THE ORIENTATION OF THE CRANK BLOCK IS POSITIONED SO THE GROOVE IS IN AN UPPER POSITION. (REFER TO " * FIGURE B") MAKE SURE SET SCREW ON THE CRANK BLOCK SETS ON THE FLAT SURFACE OF THE MOTOR SHAFT.

MAKE SURE THE SMALL JAM NUT ON THE PUMP ROD, IS THREADED ALL OF THE WAY DOWN TO THE LAST THREAD OF THE PUMP ROD. (SEE " * FIGURE C") (IF MOTOR SHAFT NEEDS SPUN, SPIN FAN PROPELLER ON BACK OF MOTOR.)

STAGE #2

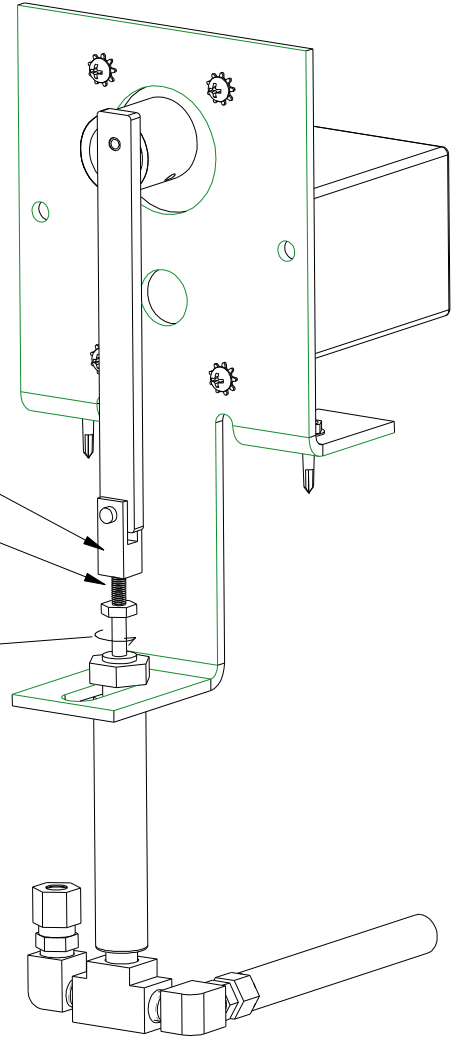
| | | |
|-------------|----------------------|---------------|
| TITLE | PUMP ASSEMBLY | |
| DESCRIPTION | 120 WASTE OIL HEATER | |
| DATE | 23-Dec-05 | DWG# CAE-0002 |



SIDE VIEW

THIS CAN ALSO BE WHERE CYLINDER STROKE CAN BE ADJUSTED. CYLINDER ROD CAN BE PULLED UP FURTHER.

ROTATE ROD SO IT THREADS INTO CLEVIS ASSEMBLY.



ISO VIEW

STAGE #3

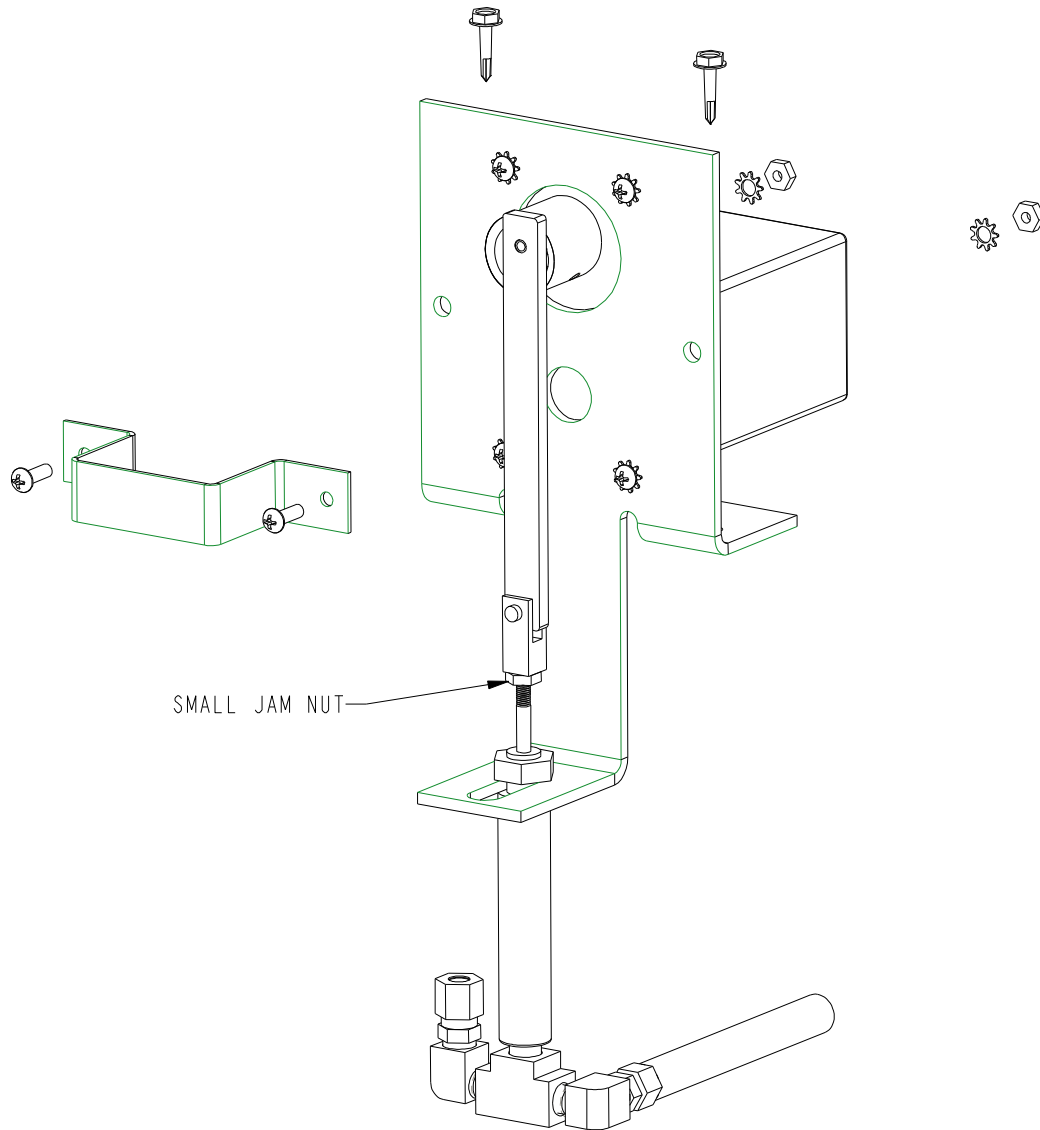
ASSURING THAT SMALL JAM NUT THREADED ALL OF THE WAY TO THE BOTTOM OF THE PUMP ROD, PULL PUMP ROD UP AS FAR AS IT WILL GO.

AS SHOWN IN THE SIDE VIEW, HOLD PUMP ROD ASSEMBLY AGAINST THE FACE OF THE CRANK BLOCK, (WITH THE PIN JUST ABOVE THE CRANK BLOCK.)

BEGIN TO SLIDE PUMP ROD ASSEMBLY DOWN SO THE CLEVIS ASSEMBLY COMES IN CONTACT WITH THE THREADED END OF THE PUMP ROD.

WHEN CONTACT IS MADE BETWEEN THE PUMP ROD AND CLEVIS ASSEMBLY, ROTATE PUMP ROD COUNTER-CLOCKWISE AND THREAD PUMP ROD INTO CLEVIS ASSEMBLY. (SEE "ISO VIEW" .)

| | | |
|-------------|----------------------|---------------|
| TITLE | PUMP ASSEMBLY | |
| DESCRIPTION | 120 WASTE OIL HEATER | |
| DATE | 23-Dec-05 | DWG# CAE-0002 |



SMALL JAM NUT

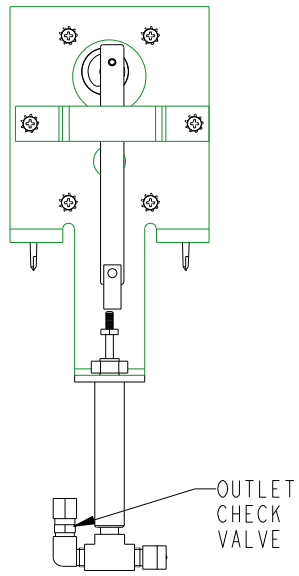
STAGE #4

KEEP THREADING PUMP ROD, INTO CLEVIS ASSEMBLY UNTIL THE PIN ON THE PUMP ROD ASSEMBLY DROPS INTO THE UPPER SLOT OF THE CRANK BLOCK.

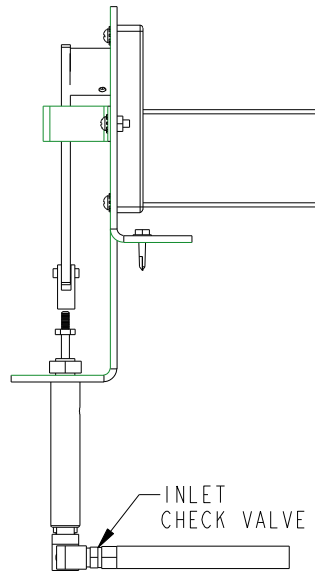
WHEN THE PIN DROPS INTO THE UPPER GROOVE, STOP THREADING PUMP ROD INTO THE CLEVIS ASSEMBLY AND THREAD SMALL JAM NUT UP AGAINST CLEVIS ASSEMBLY AND TIGHTEN JAM NUT.

FINISH BY INSTALLING GUARD AND OTHER FASTENERS.

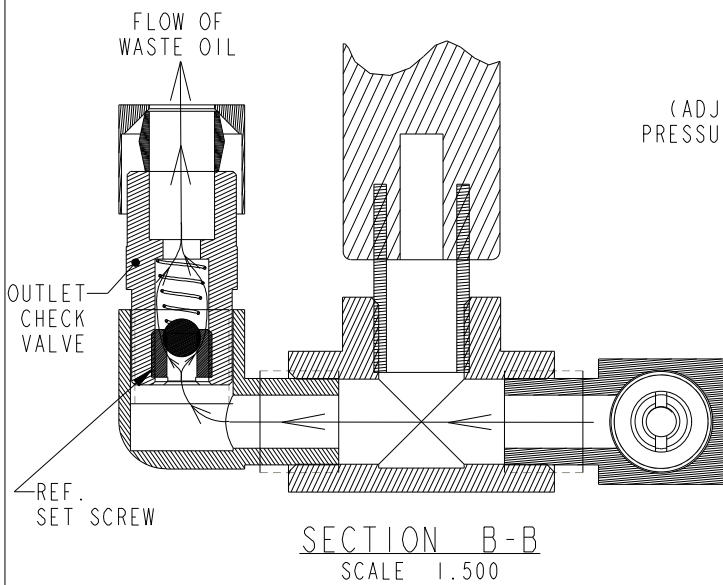
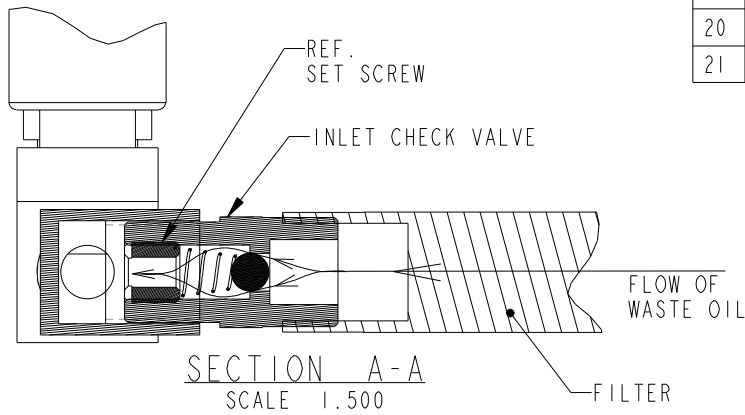
| | | |
|-------------|----------------------|---------------|
| TITLE | PUMP ASSEMBLY | |
| DESCRIPTION | 120 WASTE OIL HEATER | |
| DATE | 28-Dec-05 | DWG# CAE-0002 |



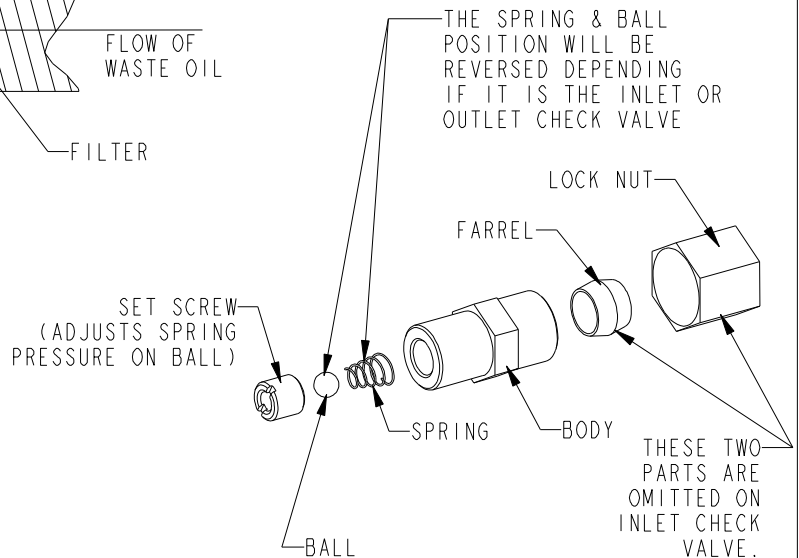
FRONT VIEW



SIDE VIEW



| BILL OF MATERIALS | | | |
|-------------------|-----|--------------------------|-------------|
| ITEM | QTY | PART DESCRIPTION | PART \ DRW# |
| 1 | 1 | BUSHING | 63315 |
| 2 | 1 | CLEVIS ASSEMBLY | 63375 |
| 3 | 1 | CRANK BLOCK | 63510 |
| 4 | 1 | ROLL PIN | 64380 |
| 5 | 1 | SET SCREW | 64425 |
| 6 | 1 | BRASS TEE | 64590 |
| 7 | 2 | ELBOW | 01-131005 |
| 8 | 1 | NIPPLE CLOSE | 01-251002 |
| 9 | 6 | SCREW | 02-101100 |
| 10 | 2 | SCREW | 02-101400 |
| 11 | 2 | NUT | 02-301000 |
| 12 | 1 | NUT | 02-301002 |
| 13 | 6 | STAR WASHER | 02-501002 |
| 14 | 1 | CHECK VALVE - INLET | 05-000202 |
| 15 | 1 | CHECK VALVE - OUTLET | 05-000204 |
| 16 | 1 | PUMP CYLINDER | 06-000102 |
| 17 | 1 | PUMP GEAR MOTOR | 07-000101 |
| 18 | 1 | PUMP SCREEN | 10-002306 |
| 19 | 1 | PUMP ROD SUPPORT BRACKET | BAE-0007 |
| 20 | 1 | PUMP MOTOR BRACKET | BAE-0210 |
| 21 | 1 | PUMP ROD | BAE-0211 |



CHECK VALVE
DETAIL

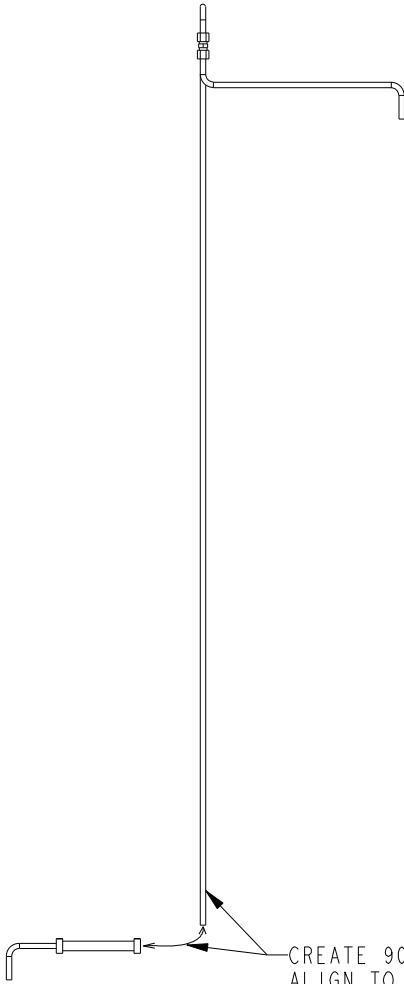
| | | |
|-------------|----------------------|---------------|
| TITLE | PUMP ASSEMBLY | |
| DESCRIPTION | 120 WASTE OIL HEATER | |
| DATE | 11-Jul-06 | DWG# CAE-0002 |

BILL OF MATERIALS

| ITEM | QTY | PART DESCRIPTION | PART \ DRW# |
|------|-----|----------------------|-------------|
| 1 | 1 | BRASS CONNECTOR | 64745 |
| 2 | 2 | CLAMP | 01-451004 |
| 3 | 1 | FUEL LINE | 2202-16 |
| 4 | 1 | HORIZONTAL DRIP TUBE | BAE-0243 |
| 5 | 1 | VERTICLE DRIP TUBE | BAE-0256 |
| 6 | 1 | ELBOW - COPPER TUBE | BAE-0257 |



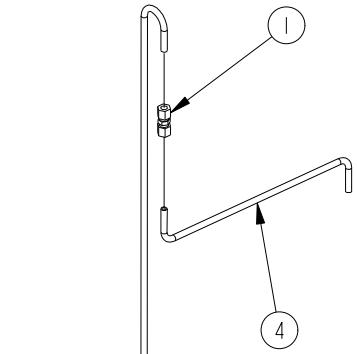
TOP VIEW



FRONT VIEW



SIDE VIEW



CREATE 90° BEND
TO ALIGN TO HOSE.

TO BRASS CONNECTOR
ON PUMP ASSEMBLY.

ISO VIEW

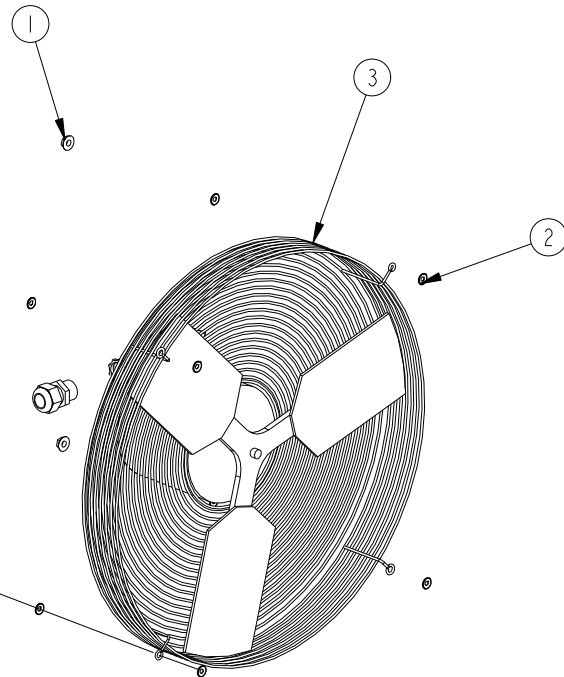
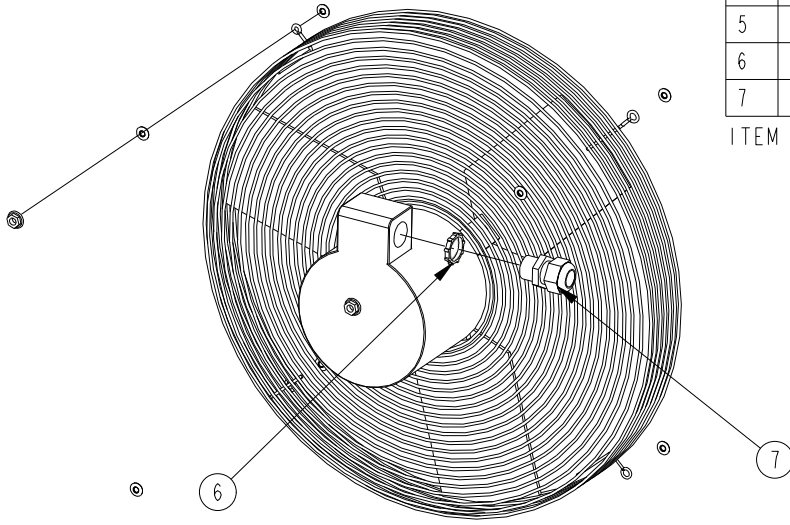
NOTE 90° BEND SHOULD BE
CREATED DURING INSTALLATION.

| | | |
|-------------|--------------------|---------------|
| TITLE | DRIP TUBE ASSEMBLY | |
| DESCRIPTION | WASTE OIL HEATER | |
| DATE | 13-Jan-05 | DWG# EAE-0003 |

BILL OF MATERIALS

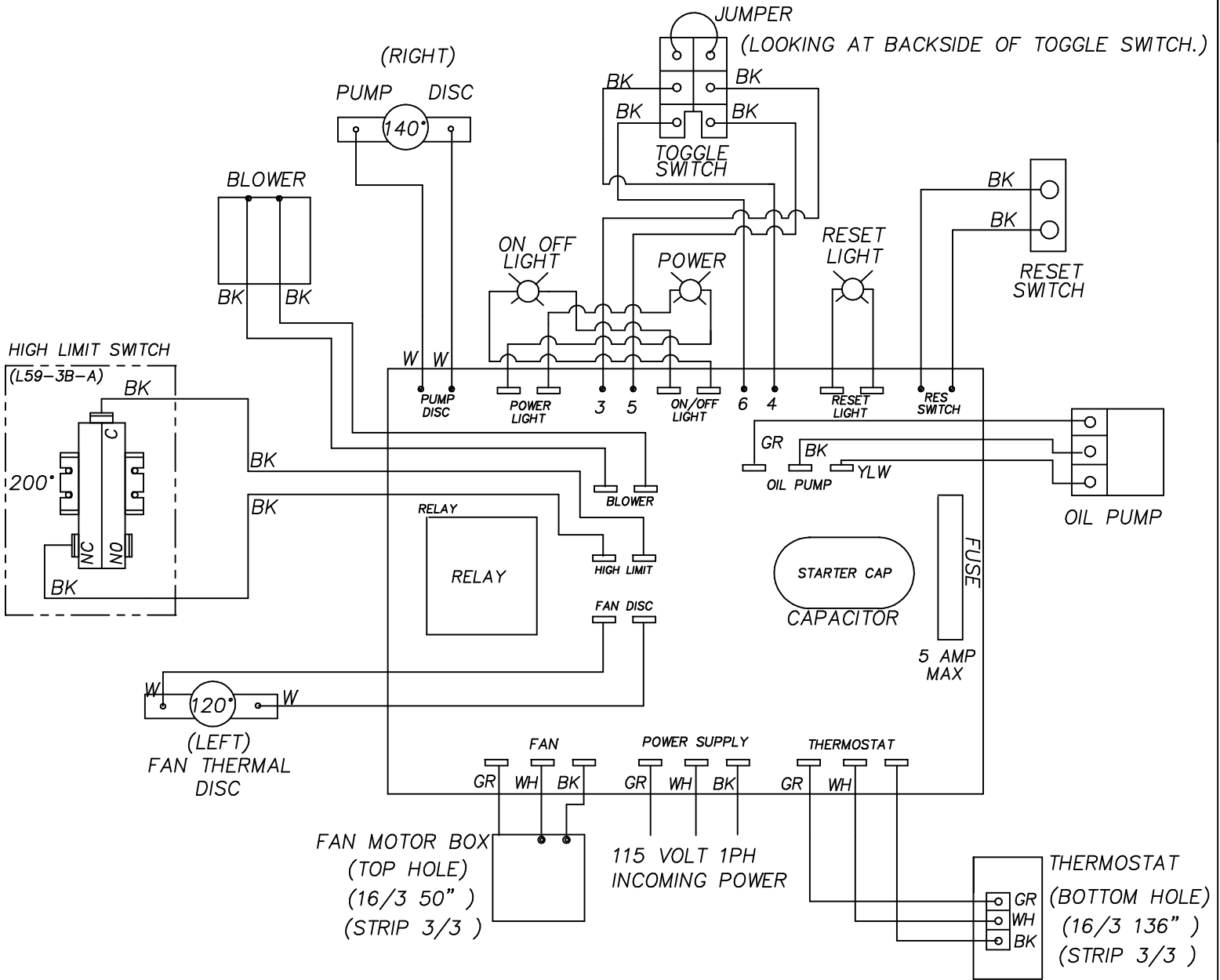
| ITEM | QTY | PART DESCRIPTION | PART \ DRW# |
|------|-----|------------------|-------------|
| 1 | 4 | NUT | 02-301100 |
| 2 | 8 | WASHER, RUBBER | 02-501306 |
| 3 | 1 | FAN | 03-001203 |
| 4 | 1 | INLINE CONNECTOR | 03-181500 |
| 5 | 1 | INLINE CONNECTOR | 03-181501 |
| 6 | 1 | NUT | 03-191005 |
| 7 | 1 | HEYCO CONN. | 03-192520 |

ITEM #4 & #5 ARE NOT SHOWN.

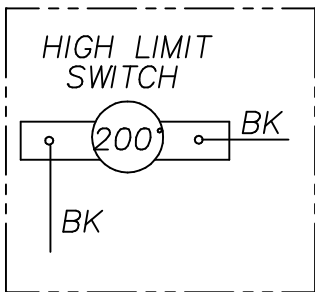


ISO VIEWS

| | | | |
|-------------|------------------|------|----------|
| TITLE | FAN ASSEMBLY | | |
| DESCRIPTION | WASTE OIL HEATER | | |
| DATE | 17-Jan-05 | DWG# | EAE-0004 |



NOTE: PREVIOUSLY USED SWITCH



WIRE COLOR CODES:

BK = BLACK
G = GREEN
W = WHITE
Y = YELLOW

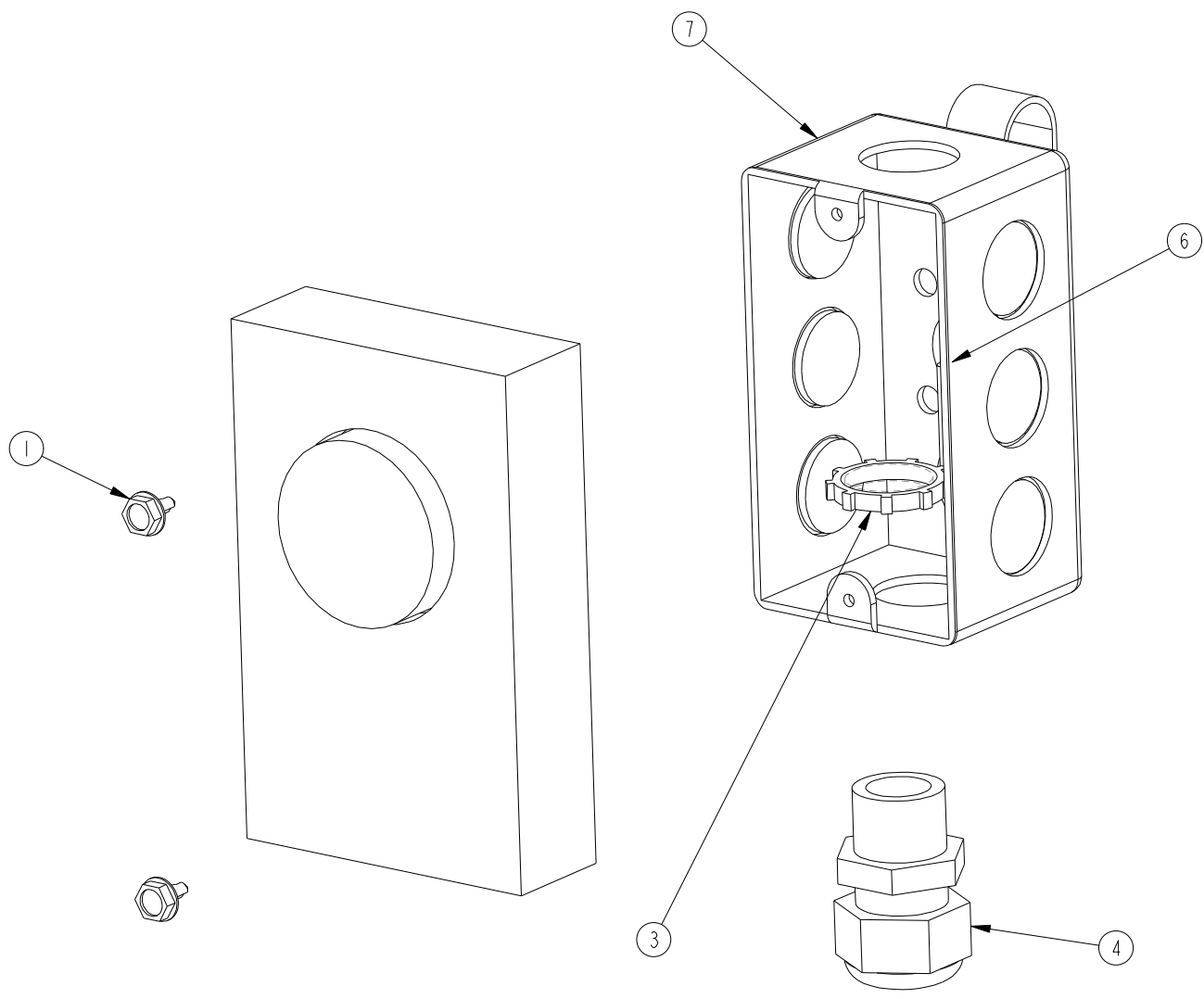
BK = BLACK
W = WHITE
WH = WHITE
GR = GREEN
YLW = YELLOW-WHITE STRIPE

TITLE 120 WASTE OIL DIAGRAM

DESCRIPTION WASTE OIL HEATER

BILL OF MATERIALS

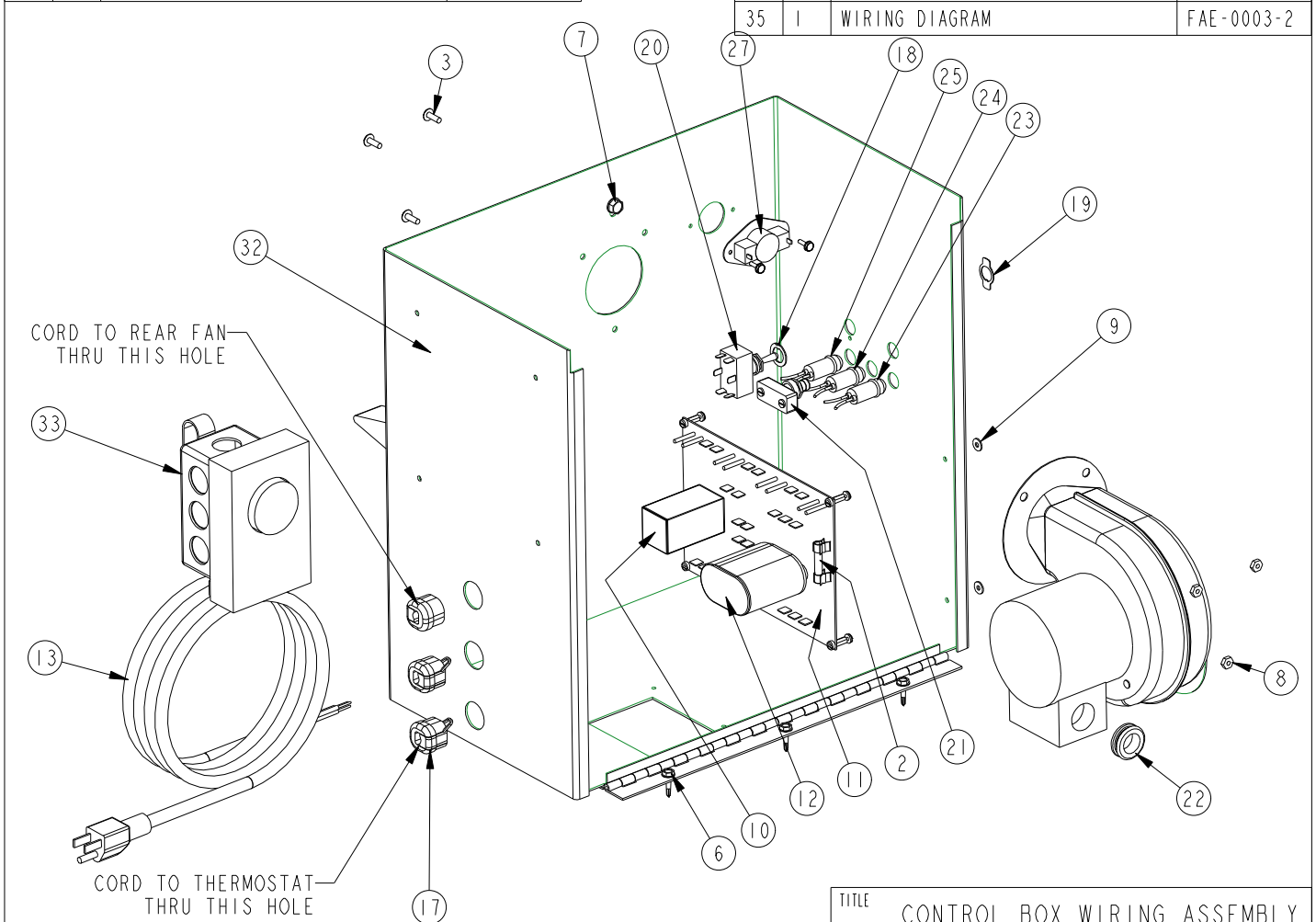
| ITEM | QTY | PART DESCRIPTION | PART \ DRW# |
|------|-----|------------------------|-------------|
| 1 | 2 | SCREW | 02-101300 |
| 2 | 3 | TERMINAL FORK | 03-181099 |
| 3 | 1 | NUT | 03-191005 |
| 4 | 1 | HEYCO CONN. | 03-192520 |
| 5 | 1 | THERMOSTAT | 04-101460 |
| 6 | 1 | 1/6/3 SJO | 2155-120 |
| 7 | 1 | THERMOSTAT BOX WELDMNT | BAE-0253 |



| | | |
|-------------|---------------------|---------------|
| TITLE | THERMOSTAT ASSEMBLY | |
| DESCRIPTION | WASTE OIL HEATER | |
| DATE | | DWG# FAE-0006 |

| BILL OF MATERIALS | | | |
|-------------------|-----|---------------------------|-------------|
| ITEM | QTY | PART DESCRIPTION | PART \ DRW# |
| 1 | 1 | DECAL: POWER-ON/OFF-RESET | 63560 |
| 2 | 1 | 5 AMP FUSE | 63780 |
| 3 | 3 | SCREW | 02-100415 |
| 4 | 4 | SCREW, TEK | 02-101001 |
| 5 | 2 | SCREW | 02-101300 |
| 6 | 3 | SCREW | 02-101400 |
| 7 | 1 | SCREW | 02-101600 |
| 8 | 3 | NUT | 02-301000 |
| 9 | 4 | WASHER | 02-501003 |
| 10 | 1 | RELAY | 03-001301 |
| 11 | 1 | CIRCUIT BOARD | 03-001302 |
| 12 | 1 | CAPACITOR | 03-001305 |
| 13 | 1 | CORDSET | 03-141096 |
| 14 | 18 | INSULATED PUSH ON | 03-181001 |
| 15 | 1 | INLINE CONNECTOR | 03-181500 |
| 16 | 5 | INLINE CONNECTOR | 03-181501 |
| 17 | 3 | K CONNECTOR | 03-192000 |

| BILL OF MATERIALS | | | |
|-------------------|-----|------------------------|-------------|
| ITEM | QTY | PART DESCRIPTION | PART \ DRW# |
| 18 | 1 | LOCK RING | 03-211002 |
| 19 | 1 | ON/OFF PLATE | 03-211411 |
| 20 | 1 | ON/OFF SWITCH | 03-211412 |
| 21 | 1 | PUSH SWITCH | 03-223000 |
| 22 | 1 | GROMMET | 03-241002 |
| 23 | 1 | INDICATOR LIGHT, RED | 03-273020 |
| 24 | 1 | INDICATOR LIGHT, AMBER | 03-273030 |
| 25 | 1 | INDICATOR LIGHT, GREEN | 03-273040 |
| 26 | 1 | THERMO DISK - 120 | 04-000101 |
| 27 | 1 | THERMO DISK - 140 | 04-000102 |
| 28 | 1 | FAN LIMIT CONTROL | 04-000300 |
| 29 | 1 | GREEN WIRE: 14 Ga | 2111-24 |
| 30 | 1 | RED WIRE: 16A | 2127-24 |
| 31 | 1 | 16/3 SJO | 2155-42 |
| 32 | 1 | CONTROL BOX WELDMENT | BAE-0217 |
| 33 | 1 | THERMOSTAT ASSEMBLY | FAE-0006 |
| 34 | 1 | EXHAUST MOTOR ASSEMBLY | FAE-0009 |
| 35 | 1 | WIRING DIAGRAM | FAE-0003-2 |



- SHEET 1 OF 2 -

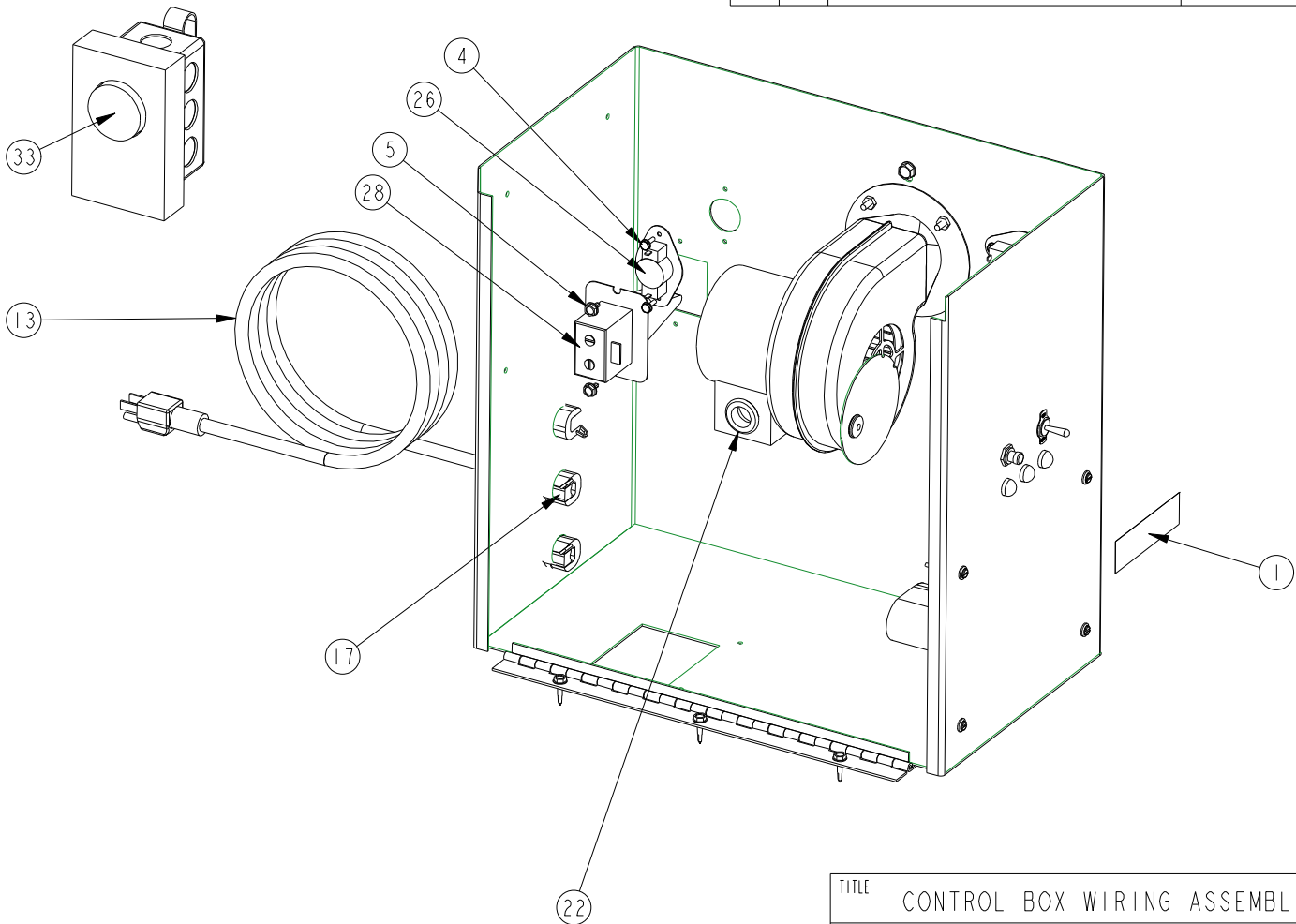
| | | |
|-------------|-----------------------------|---------------|
| TITLE | CONTROL BOX WIRING ASSEMBLY | |
| DESCRIPTION | WASTE OIL HEATER | |
| DATE | 11-Jan-05 | DWG# FAE-0007 |

BILL OF MATERIALS

| ITEM | QTY | PART DESCRIPTION | PART \ DRW# |
|------|-----|---------------------------|-------------|
| 1 | 1 | DECAL: POWER-ON/OFF-RESET | 63560 |
| 2 | 1 | 5 AMP FUSE | 63780 |
| 3 | 3 | SCREW | 02-100415 |
| 4 | 4 | SCREW, TEK | 02-101001 |
| 5 | 2 | SCREW | 02-101300 |
| 6 | 3 | SCREW | 02-101400 |
| 7 | 1 | SCREW | 02-101600 |
| 8 | 3 | NUT | 02-301000 |
| 9 | 4 | WASHER | 02-501003 |
| 10 | 1 | RELAY | 03-001301 |
| 11 | 1 | CIRCUIT BOARD | 03-001302 |
| 12 | 1 | CAPACITOR | 03-001305 |
| 13 | 1 | CORDSET | 03-141096 |
| 14 | 18 | INSULATED PUSH ON | 03-181001 |
| 15 | 1 | INLINE CONNECTOR | 03-181500 |
| 16 | 5 | INLINE CONNECTOR | 03-181501 |
| 17 | 3 | K CONNECTOR | 03-192000 |

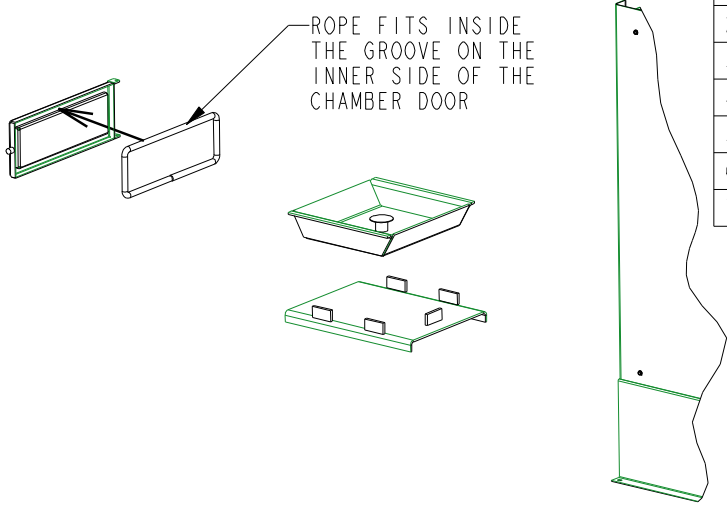
BILL OF MATERIALS

| ITEM | QTY | PART DESCRIPTION | PART \ DRW# |
|------|-----|------------------------|-------------|
| 18 | 1 | LOCK RING | 03-211002 |
| 19 | 1 | ON/OFF PLATE | 03-211411 |
| 20 | 1 | ON/OFF SWITCH | 03-211412 |
| 21 | 1 | PUSH SWITCH | 03-223000 |
| 22 | 1 | GROMMET | 03-241002 |
| 23 | 1 | INDICATOR LIGHT, RED | 03-273020 |
| 24 | 1 | INDICATOR LIGHT, AMBER | 03-273030 |
| 25 | 1 | INDICATOR LIGHT, GREEN | 03-273040 |
| 26 | 1 | THERMO DISK - 120 | 04-000101 |
| 27 | 1 | THERMO DISK - 140 | 04-000102 |
| 28 | 1 | FAN LIMIT CONTROL | 04-000300 |
| 29 | 1 | GREEN WIRE: 14 Ga | 2111-24 |
| 30 | 1 | RED WIRE: 16A | 2127-24 |
| 31 | 1 | 16/3 SJO | 2155-42 |
| 32 | 1 | CONTROL BOX WELDMENT | BAE-0217 |
| 33 | 1 | THERMOSTAT ASSEMBLY | FAE-0006 |
| 34 | 1 | EXHAUST MOTOR ASSEMBLY | FAE-0009 |
| 35 | 1 | WIRING DIAGRAM | FAE-0003-2 |



- SHEET 2 OF 2 -

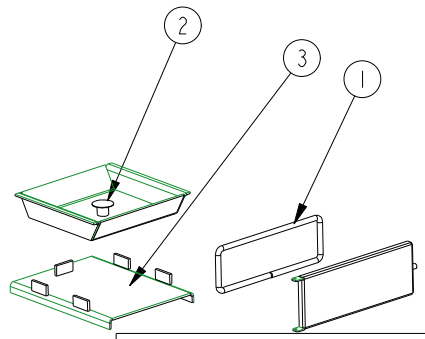
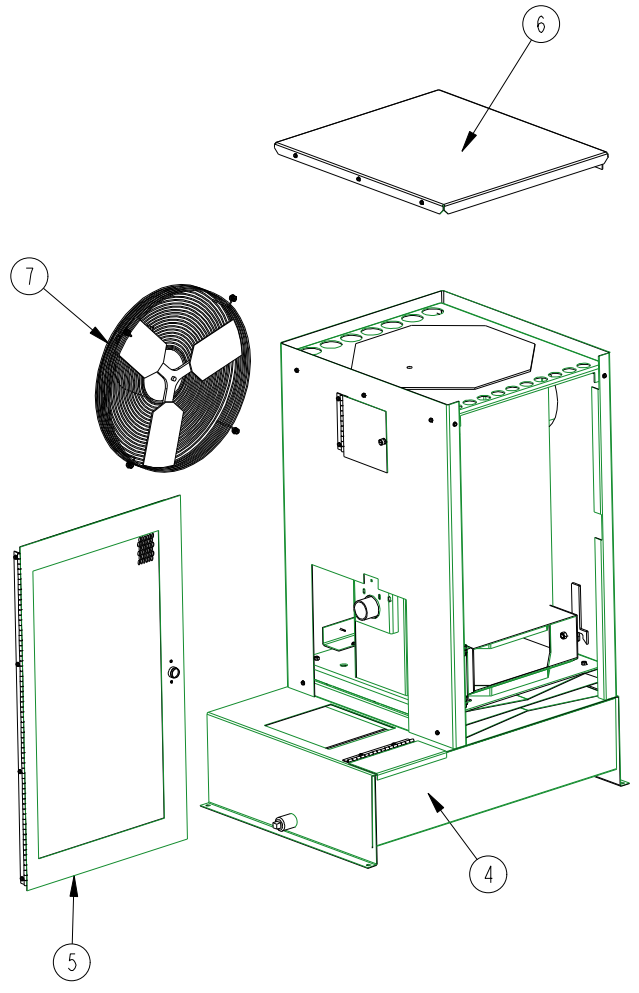
| | | |
|-------------|-----------------------------|---------------|
| TITLE | CONTROL BOX WIRING ASSEMBLY | |
| DESCRIPTION | WASTE OIL HEATER | |
| DATE | 11-Jan-05 | DWG# FAE-0007 |



| BILL OF MATERIALS | | | |
|-------------------|-----|------------------------|-------------|
| ITEM | QTY | PART DESCRIPTION | PART \ DRW# |
| 1 | 1 | ROPE INSULATION | 2005-33P0_ |
| 2 | 1 | VAPORIZER PAN WELDMNT | BAE-0187 |
| 3 | 1 | SUPPORT TRAY WELDMNT | BAE-0252 |
| 4 | 1 | CHAMBER ASSEMBLY | BAE-0260 |
| 5 | 1 | CHAMBER DOOR ASS'Y | BAE-0264_ |
| 6 | 1 | WRAPPER COVER ASSEMBLY | BAE-0265 |
| 7 | 1 | FAN ASSEMBLY | EAE-0004 |

CHAMBER DOOR SHOWN REMOVED FROM CHAMBER FOR CLARITY.
 CHAMBER WRAPPER DOOR SHOWN OPEN FOR CLARITY.

ROPE INSULATION INSTALLATION



| | | |
|-------------|----------------------|----------------|
| TITLE | MACHINE SUB-ASSEMBLY | |
| DESCRIPTION | 120 WASTE OIL HEATER | |
| DATE | | DWG# XAE-0001_ |